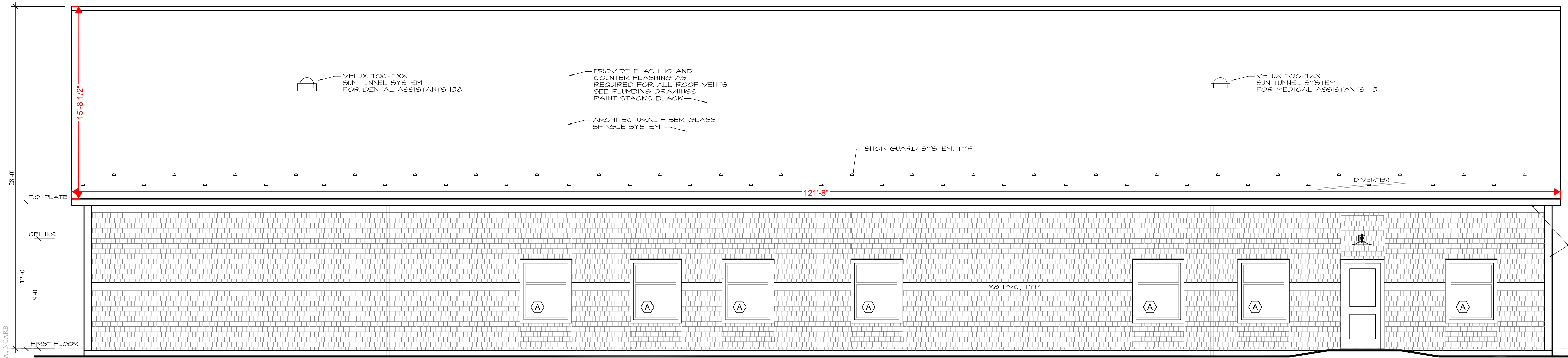
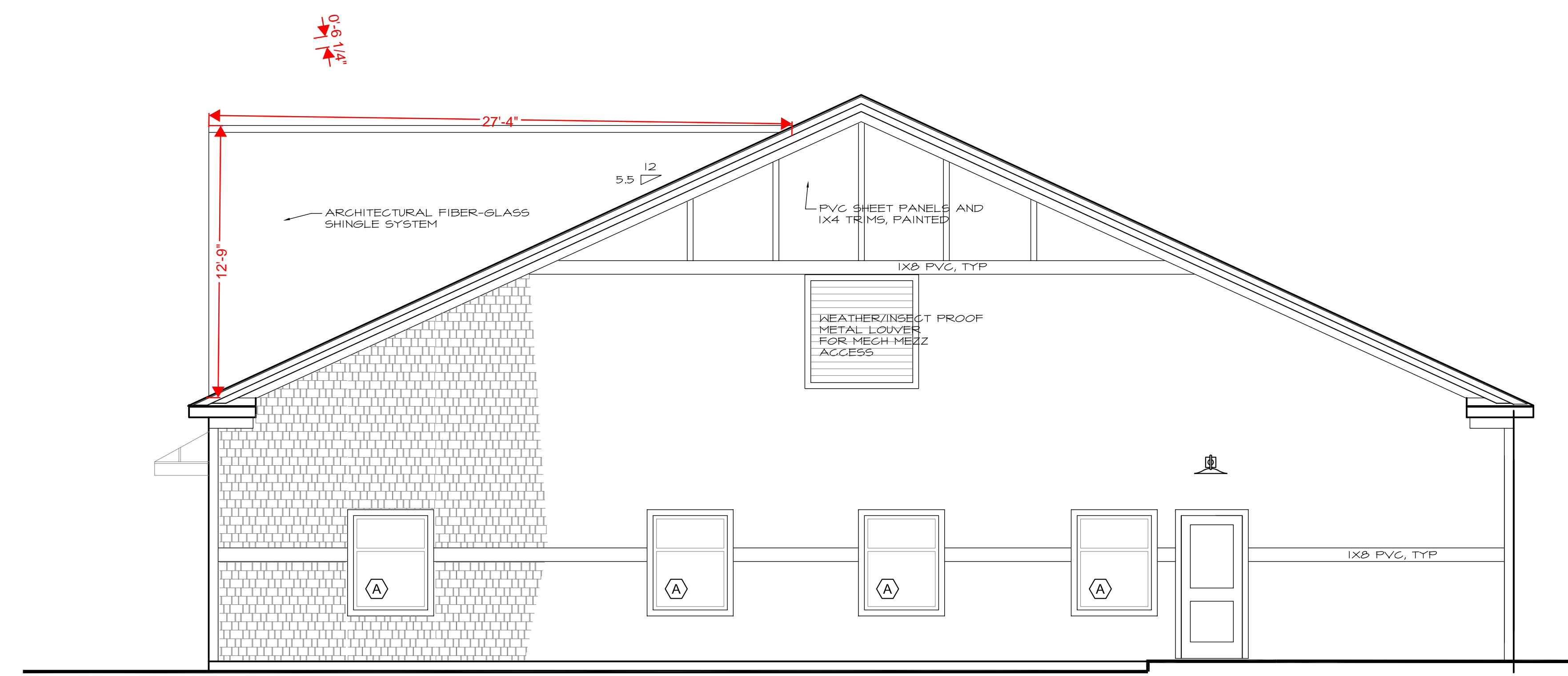


ALL DRAWINGS AND SPECIFICATIONS, AS INSTRUMENTS OF PROFESSIONAL SERVICE, ARE AND SHALL REMAIN THE PROPERTY OF PHELPS ARCHITECTS INC. THESE DOCUMENTS ARE NOT TO BE USED IN WHOLE OR IN PART FOR ANY OTHER PROJECTS OR PURPOSES OR BY ANY OTHER PARTIES THAN THOSE PROPERLY AUTHORIZED BY CONTRACT WITHOUT THE SPECIFIC WRITTEN AUTHORIZATION OF DANIEL A. PHELPS, A.I.A., NCARB



SOUTH ELEVATION
1/4" = 1'-0"



WEST ELEVATION
1/4" = 1'-0"

HEALTHWAYS EAST MACHIAS CLINIC
980 Main Street, Route 1
East Machias, Maine

REVISIONS:	DATE:

DRAWING TITLE:

EXTERIOR ELEVATION

DATE:
09/24/25
ISSUE FOR BID

SCALE:
AS NOTED

DRAWING NUMBER:

ALL DRAWINGS AND SPECIFICATIONS, AS INSTRUMENTS OF PROFESSIONAL SERVICE, ARE AND SHALL REMAIN THE PROPERTY OF PHELPS ARCHITECTS INC. THESE DOCUMENTS ARE NOT TO BE USED IN WHOLE OR IN PART FOR ANY OTHER PROJECTS OR PURPOSES OR BY ANY OTHER PARTIES THAN THOSE PROPERLY AUTHORIZED BY CONTRACT WITHOUT THE SPECIFIC WRITTEN AUTHORIZATION OF DANIEL A. PHELPS, A.I.A., NCARB

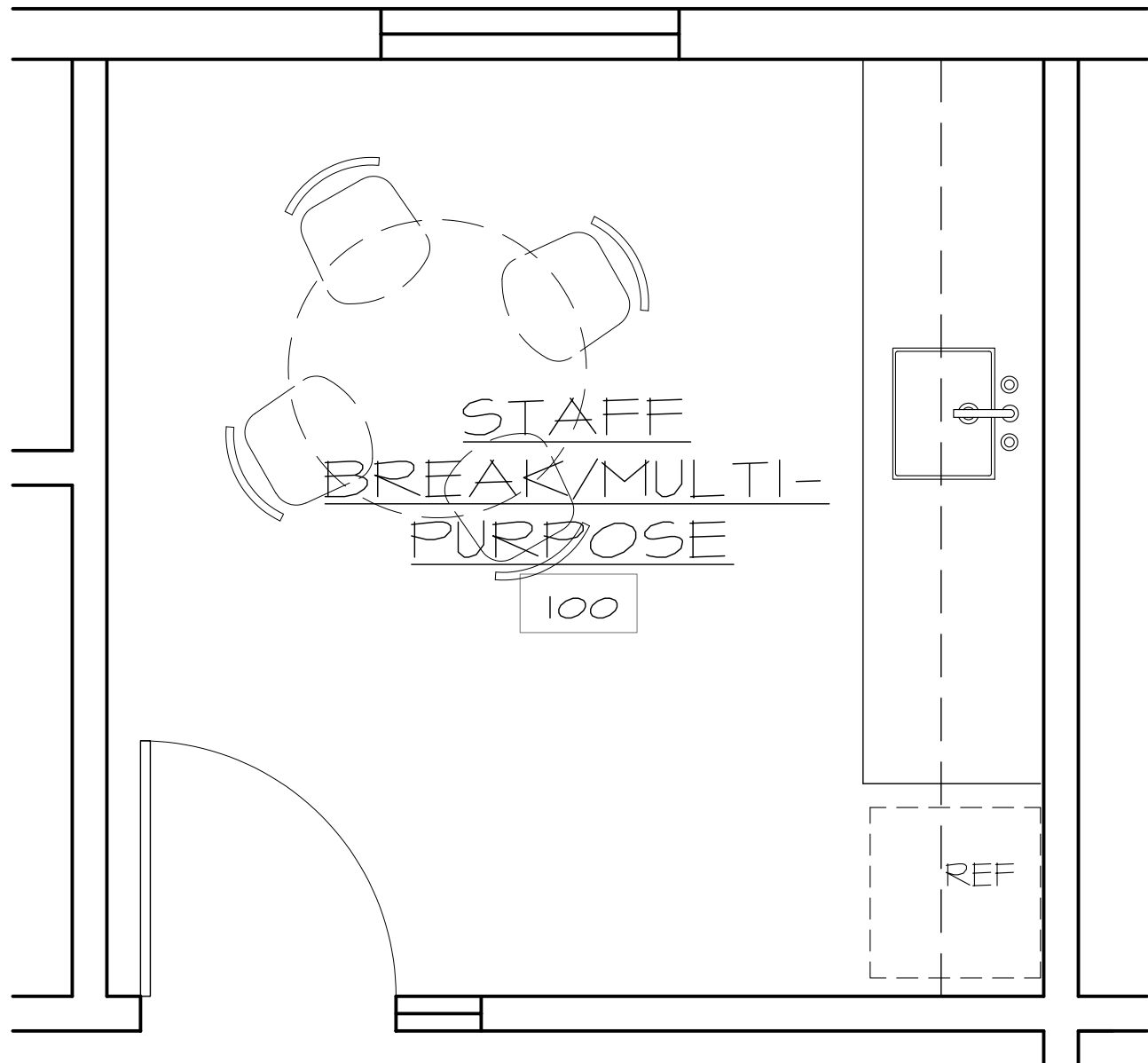
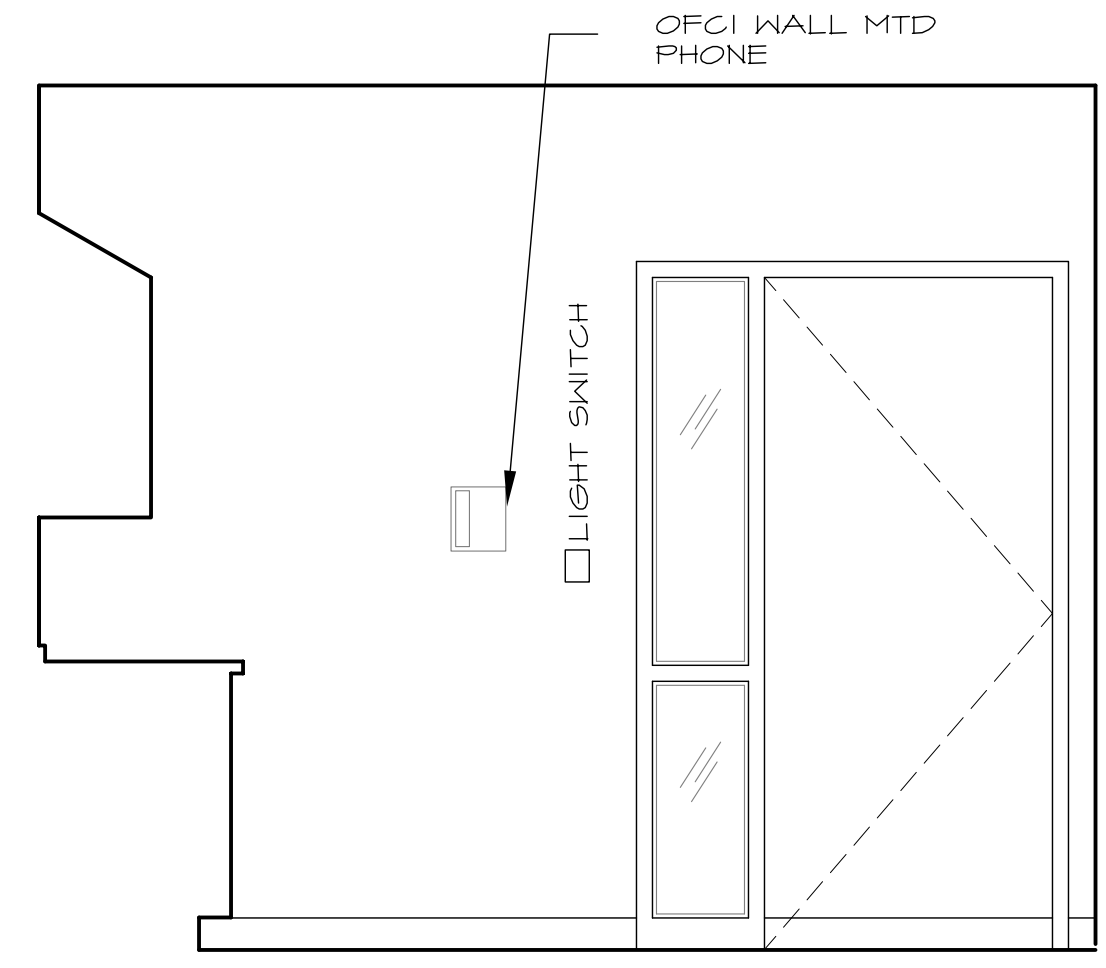
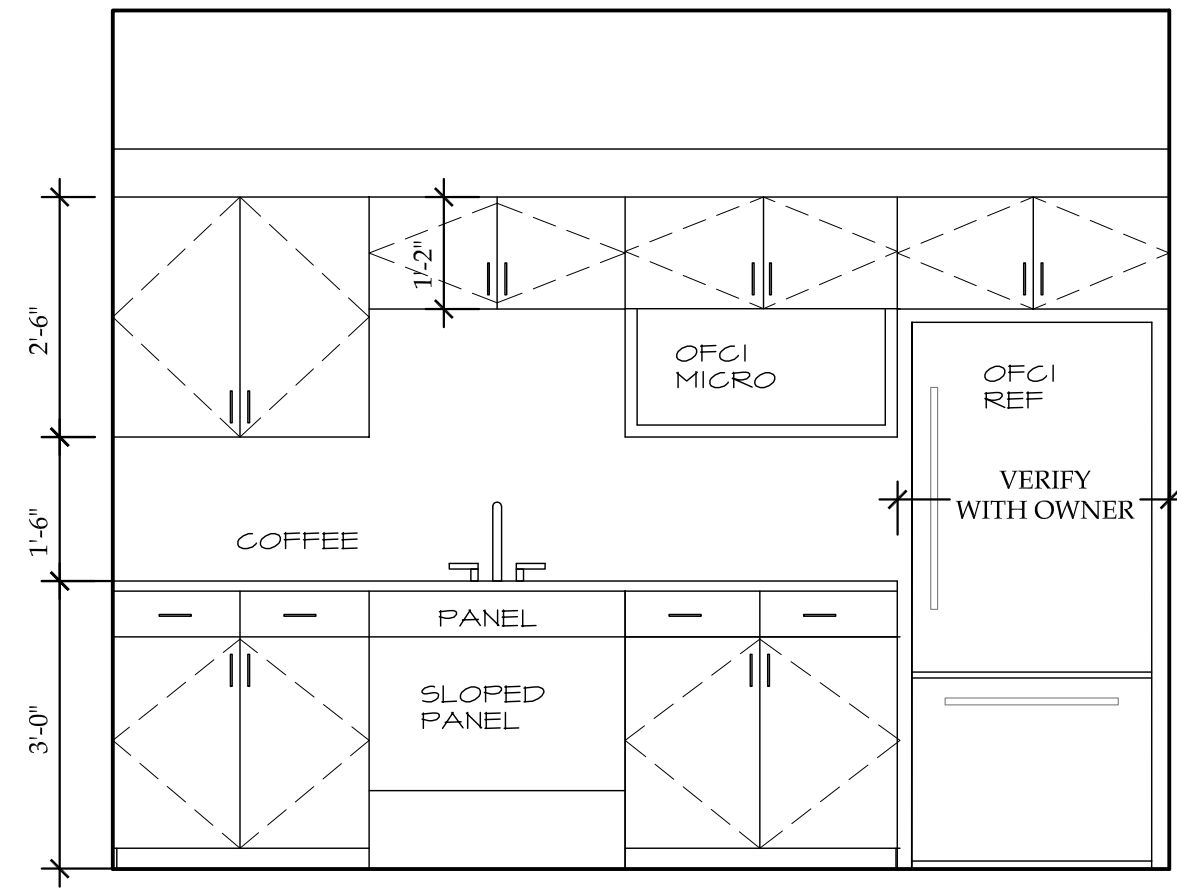
- ◆ PLANNING
- ◆ COMMERCIAL
- ◆ RESIDENTIAL
- ◆ INTERIOR DESIGN

MICHELLE B. PHELPS, AIA, NCARB
DANIEL A. PHELPS, AIA, NCARB

278 MAIN STREET, P.O. BOX 32
DAMARISCOTTA, ME 04543
PH 207-563-1616

254 COMMERCIAL STREET
MERRILL'S WHARF, SUITE 245
PORTLAND, ME 04101
PH 207-523-3441

www.phelpsarchitects.com



HEALTHWAYS
EAST MACHIAS CLINIC
980 Main Street, Route 1
East Machias, Maine

REVISIONS:	DATE:

DRAWING TITLE:
PROGRESS
INTERIOR ELEVATIONS

DATE:
09/24/25
ISSUE FOR BID

SCALE:
1/2" = 1'-0"

DRAWING NUMBER:

A-505

